



NOAA FISHERIES

Fisheries Statistics Division
NMFS Southeast Fisheries Science Center
Miami, FL

GSMFC - Fall Meeting
October 15, 2024

Update on the 2024 Atlantic Menhaden Fishery



2024 Landings for Reduction

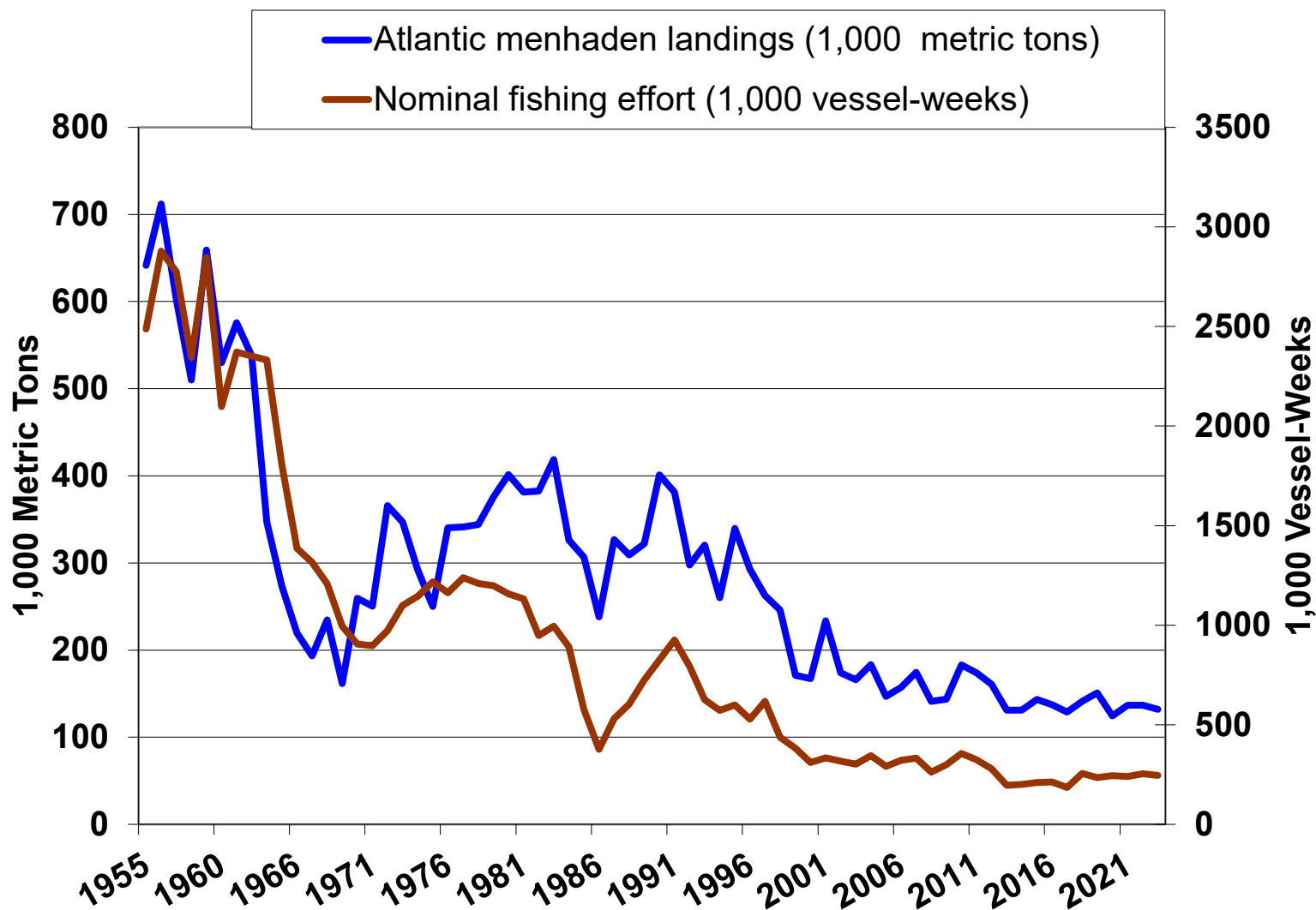
- One fish factory on Atlantic coast at Reedville, VA, since 2005
- As last year, 2024 landings for reduction constrained by the coastwide TAC
 - TAC remained the same at 231,215 mt for 2024 (156,577 mt for reduction)
- Through September 30:
 - 85,141 metric tons (or 280 million standard fish)
 - Increased 10% from 2023 (77,138 mt)
 - Decreased 12% from previous 5-yr average (96,440 mt)

Vessel Participation in 2024

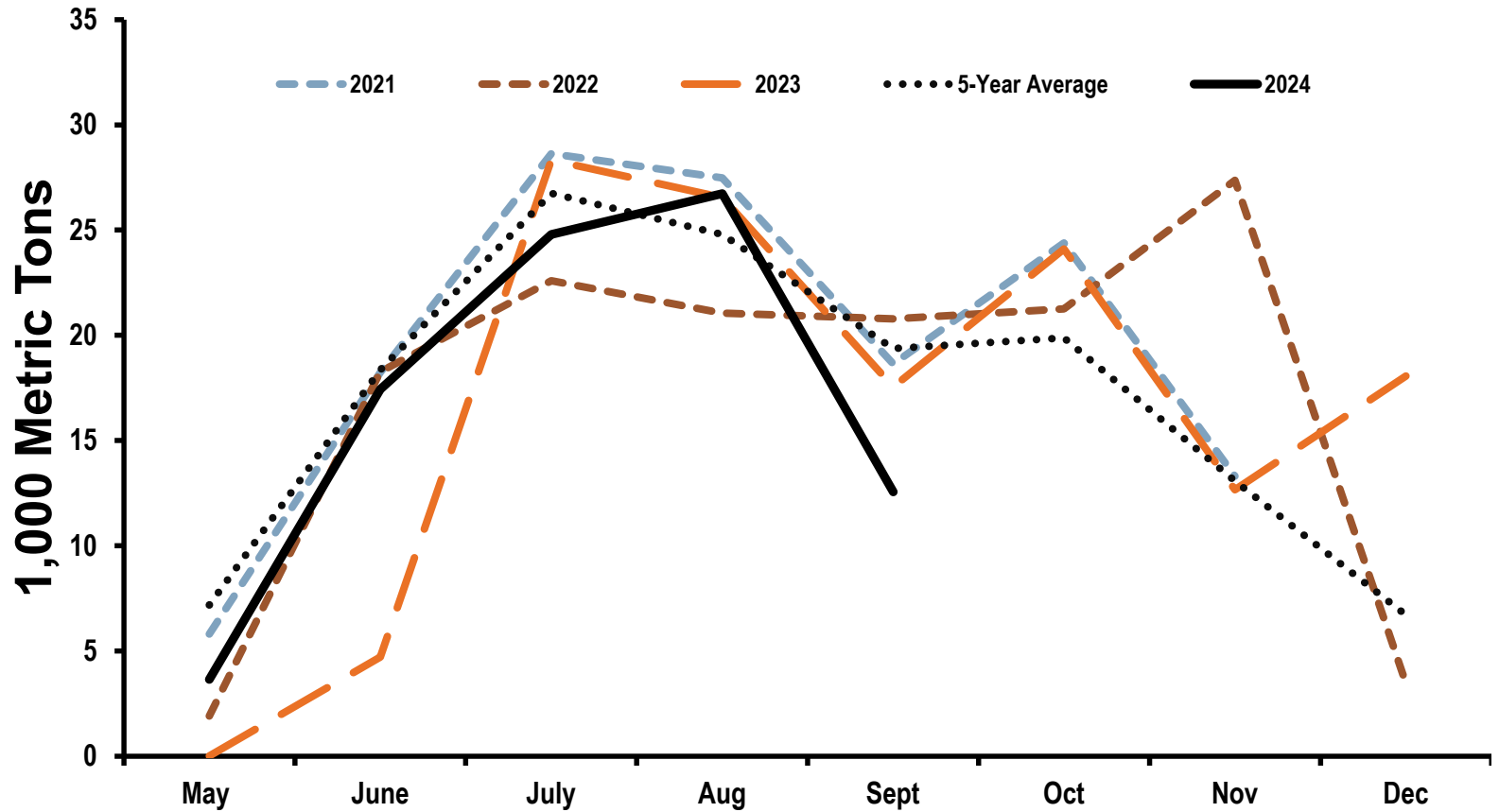
- 7 Omega Protein vessels unloaded Atlantic menhaden for reduction in 2024 at Reedville
- 1 bait vessel landing bait



Reduction Landings and Nominal Fishing Effort



Reduction Landings by Month



Coastwide Stock

- Bait Closures
 - Maine Episodic Event Fishery: Open
 - Massachusetts: Open
 - Rhode Island: Open
 - New York: Open
 - New Jersey: Open
 - Connecticut: Open
 - Virginia: Open

2024 Atlantic Menhaden TAC, by allocation unit

Unit	Percent of TAC	2024 (1,000 Metric Tons)
ME	4.80%	11,097
NH	1.2%	2,742
MA	2.1%	4,909
RI	0.81%	1,880
CT	0.33%	768
NY	0.8%	1,948
NJ	11.0%	25,429
PA	0.01%	23
DE	0.27%	624
MD	1.2%	2,695
PRFC	1.1%	2,513
VA Total	75.21%	173,897
VA (Reduction)	90.04%	156,577
VA (Bait)	10.0%	17,320
NC	0.4%	858
SC	0.3%	578
GA	0.3%	578
FL	0.3%	676
Total	100%	231,215*

* Does not include the 1% episodic set-aside

Atlantic menhaden assessment

- Multi-species assessment efforts underway
- Single species assessment efforts underway
- Assessments will be presented to the board when complete

Questions?

